

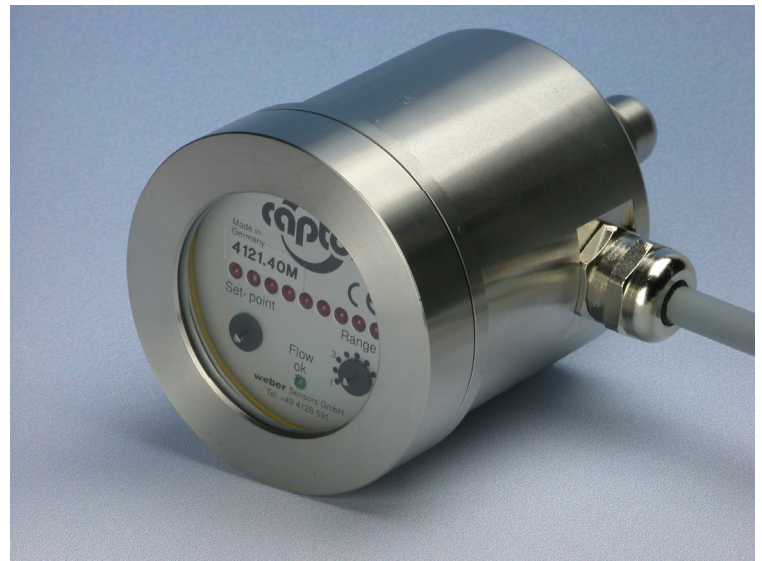
Precise flow switch



flow-captor 412x.40M/.41M

The flow-captor type **412x.40M/.41M** is a compact, precise flow switch with analog display in a rugged stainless steel housing. It operates according to the calorimetric principle. The flow-captor allows to set an exact flow set-point and will display simultaneously the flow rate up to the lowest flow conditions.

- precise switching flow monitor for water or oil based solutions up to 100 bar
- high accuracy also under low flow conditions
- separate adjustment for „range“ and „set-point“
- analog display of actual flow rate and display of adjusted set-point value
- LED display for output status

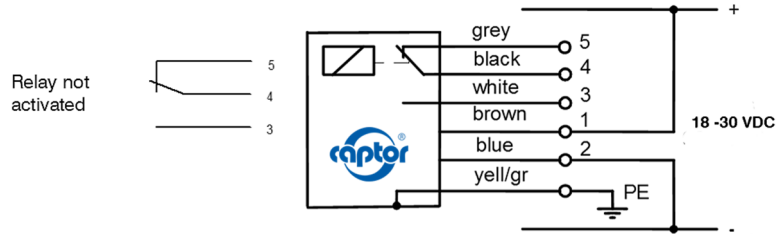


| Technical Data | | |
|--------------------------|---|---------------------------------------|
| Typ | 4120.40M/.41M | 4121.40M/.41M |
| Medium | water-based media | oil-based media |
| Sensor Data *1 | | |
| Measuring range | 0-20 cm/s to 0-300 cm/s, cont. adjust | 0-30 cm/s to 0-300 cm/s, cont. adjust |
| Set-point range | approx. 15% - 90% of measuring range setting | |
| Medium temperature | - 20 °C to + 80 °C | |
| Ambient temperature | - 20 °C to + 70 °C | |
| Pressure | max. 100 bar (1000 Kpa) | |
| Response time | 2s - 10s, according to range setting | 2s -15s, according to range setting |
| Linearity deviation | < 5% ¹⁾ | < 5% ²⁾ |
| Repeatability | < 2% | |
| Hysteresis | approx. 10% | |
| Mechanical Data | | |
| Protection class | IP67 | |
| Material housing | stainless steel AISI 303 | |
| Material of sensor probe | stainless steel AISI 303; (A: AISI 316Ti; B: Titanium; C: Hastelloy® C4; or D: Hastelloy® C22 on request) | |
| Thread | G ½" BSP alt. ½" 14 - NPT | |
| Housing dimensions ODxH | OD 66 X H 109/69 | |
| Electrical connection | 2 m oilflex cable 6 x 0,5 mm ² | |
| Electrical Data | | |
| Operating voltage | 18 - 30 VDC | |
| Switching current | ≤ 5A, 120 VAC/ ≤ 3A, 250 VAC/ ≤ 5A, 150W bei VDC | |
| Initial operation | approx. 10s after connection of power | |
| Electrical output | relay with potential free contact | |
| Flow < set-point | .40 | .41 |
| - LED, green | off | off |
| - Output relay | activated | not activated |

¹⁾ data relate to water ²⁾ calibrated with insulation oil type "Shell Diala"



Connection diagram



Abmessungen / Dimensions

