

Flow meter for liquid media



flow-captor 4115.3x

The flow-captor type 4115.30; ideal for all measurement and control tasks within automation processes and other industrial applications where liquid media have to be controlled. The sensor works according to the calorimetric measuring principle which allows the adjustment of the measuring range to a large quantity spectrum. It operates fully electronically and without mechanically moved parts.

- precise flow measurement
- adjustable measuring range
- either with 4 - 20 mA current output
or with 0,1 - 10 V voltage output
- robust stainless steel construction (special potting)
- **ISO 9001:2015**



Technical data

Type	4115.3x	4115.3x S115/2
Medium	water-based	oil-based

Sensor data

Measuring range	cont. adjustable from 0 - 20 cm/s to 0 - 200 cm/s ¹⁾ other range on request	cont. adjustable from 0 to 200 cm/s ²⁾
Set-point range	zero point and range adjustment by potentiometer	
Medium temperature	-10 °C - +80 °C	
Ambient temperature	-10 °C - +60 °C	
Pressure	max. 30 bar	
Response time	2 -10 sec. depends on measuring conditions	
Linearity deviation	< 5 % best fitting slope	
Repeatability	< 2 %	
Temperature drift	< 0,3 % K	

Mechanical data

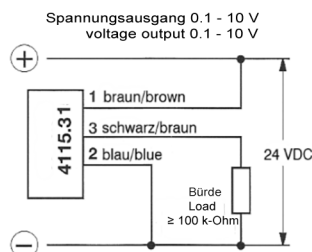
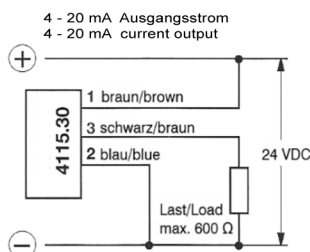
Protection class	IP65	
Material housing / sensor	stainless steel AISI 303 (other material on request)	
Material of sensor head	stainless steel AISI 303 (other material on request)	
Installation	by means of union nut G 1" A, SW 37 mm (stainless steel AISI 303)	
Electrical connection	2 m moulded oilflex cable 3 x 0,5 mm ²	
Housing dimensions	see drawing at the bottom	

Electrical data

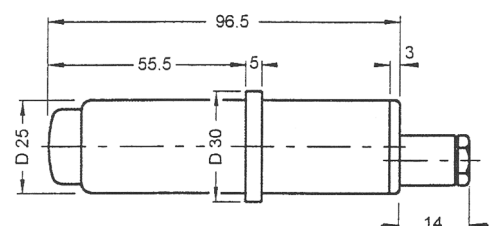
Operating voltage	24 VDC ±10 %	
Power consumption	approx. 100 - 200 mA (at max. flow)	
Output 4115.30	4 - 20 mA	
Load 4115.30	max. 600 Ω	
Output 4115.31	0.1 - 10 V	
Load 4115.31	≥ 100 k-Ohm	
Protection circuit	reverse polarity & short circuit / overload protected up to max. 30 VDC only	
Output display	green LED	

¹⁾ data relate to water ²⁾ calibrated with insulation oil type "Shell Diala"

Connection diagram:



Housing dimensions:



weber

Sensors GmbH Strohdeich 32
Sensors Ltd. 66 Eastbourne Road, Southport
Sensors LLC. 4462 Bretton Court, Building 1, Suite 7

DE-25377 Kollmar
Merseyside PR8 4DU, UK
Acworth, Georgia 30101, USA

Tel.: +49 (0)4128 - 591 · Fax: - 593
Tel.: +44 (1704) - 551684 · Fax: - 551297
Tel.: +1 (770) 592 - 6630 · Fax: - 592 6640

www.captor.de
info@captor.de
sales@captor.co.uk
sales@captor.com

Technical data subject to alteration! Rev. AG 08.03.18