

Flow monitor for liquid and pasty media



flow-captor 4114.73

The **flow-captor** type 4114.73 is a compact and universal usable flow monitor with a cylindrical housing. Available for AC and DC applications. The voltage range is from 90 to 250V AC/DC. The construction and design of this flow-captor makes application ideal even in inaccessible places and harsh environmental conditions. Its operation is based on the calorimetric principle.

- Large operating voltage range for AC and DC
- High accuracy also under low flow conditions
- Simple installation by union nut
- Rugged stainless steel version
- LED-display for set-point
- **ISO 9001 : 2015**

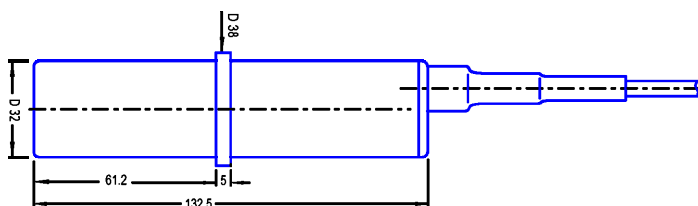


Technical Data

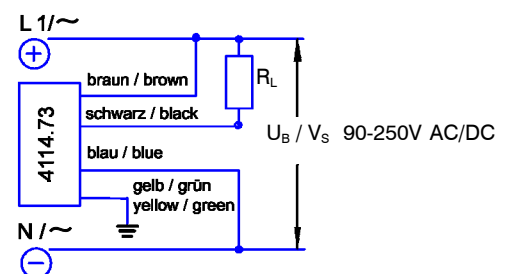
Typ	4114.73
Medium	Liquid and pasty media (aggressive media on request)
Sensor Data *1	
Measuring range	adjustable from 2 to 200 cm/s (related to water)
Set-point range	Zero point and range adjustment by potentiometer
Medium temperature	- 10°C to + 80°C
Ambient temperature	- 10°C to + 60°C
Adjustable potentiometer	logarithmical to flow rate
Pressure	max. 30 bar (3000 Kpa)
Response time	2 -10 s depends on measuring conditions
Linearity deviation	< 0,5% K
Hysteresis	< 15%
Mechanical Data	
Protection class	IP65
Sensor head and housing	stainless steel WN 1.4305 (V2A, 303), alternative: WN 1.4571 (V4A, 316 Ti)
Material of sensor probe	FP (Viton)
Mounting accessories	Union nut G 1 1/4 A, SW 50 mm (stainless steel WN 1.4305 / AISI 303)
Electrical connection	2 m moulded oilflex cable 4 x 0,5 mm ²
Electrical Data	
Operating voltage	90 - 250V AC/DC
Switching current	max. 100 mA
Power consumption	max. 3 W
LED	2-colored: green: flow rate > setting value red: flow rate < setting value

* 1) data relate to water

Dimensions in mm



Connection diagram:



weber

Sensors GmbH · Strohdreich 32 · D-25377 Kollmar · Tel.: +49 4128-591 · Fax: -593 eMail: info@captor.de

Technical data subject to alteration! · Rev. AD / 30.07.15