

Flow meter for gaseous media



vent-captor system 3506 + 3022.31/xx

The **vent-captor** type 3506 + 3022.31 is a remote flow meter for industrial applications, ideal for small pipe sizes. The measurement of the mass flow bases on the calorimetric principle. The vent-captor is completely resin encapsulated, thus rugged, shock and vibration proof.

- Small pipe diameters
- **Standard ID 20 mm (ID 19 - ID 25)**
- For air and other gaseous media
- Ideally suited to for low flow rates
- Temperature compensated
- Compact, no additional parts
- Voltage output 0,1 - 10V
- LED for range control
- Rugged industrial version
- **ISO 9001:2015**



Technical Data				
Typ	3506 + 3022.31/xx			
Medium	gaseous (agressive media on request)			
Sensor Data *1				
Measuring range	0 - 10 m/s	0 - 20 m/s	0 - 30 m/s	other range
Measuring at ID 20 mm	0 - 188 l/m	0 - 368 l/m	0 - 566 l/m	on request
Measuring range adjustment	continually adjustable from 20 % to 100 % of the specified measuring range 2 potentiometers (zero point, range)			
Linearity deviation	< 3% best fitting slope			
Repeatability tolerance	< 1%			
Temperature drift	< 0,3% / K			
Medium temperature	-20 °C to +70 °C			
Ambient temperature	-20 °C to +70 °C			
Pressure (3506)	max 16 bar			
Mechanical Data				
Protection class	IP 65			
Material	Sensor probe Ceramic, Platinum with overglaze	Sensor holding PET	Sensor housing stainl. steel WN 1.4571 AISI 316Ti	Electronic housing Makrolon®
Sensor connection	moulded oilflexcable / 3 x 0,5 mm ² , length 65 cm			
Housing dimension and connection diagram	see back page			
Electrical data				
Operating voltage	24 V DC ±10%			
Current consumption	4,3W - 5,3W (max. flow)			
Voltage output	0,1 - 10V			
Load	≥ 100KΩ			

*1 All data for medium air with normal atmospheric pressure

weber

Sensors GmbH · Strohdreich 32 · D-25377 Kollmar · Tel.: +49 4128-591 · Fax: -593 eMail: info@captor.de

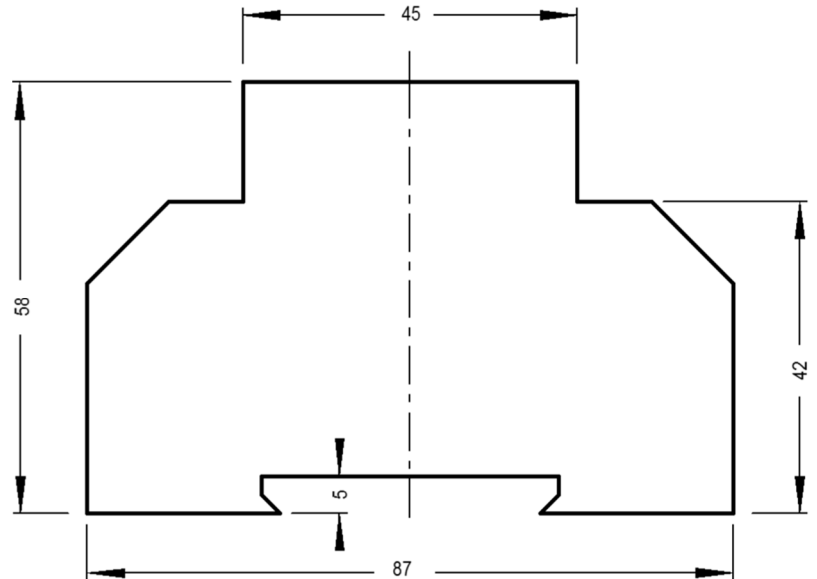
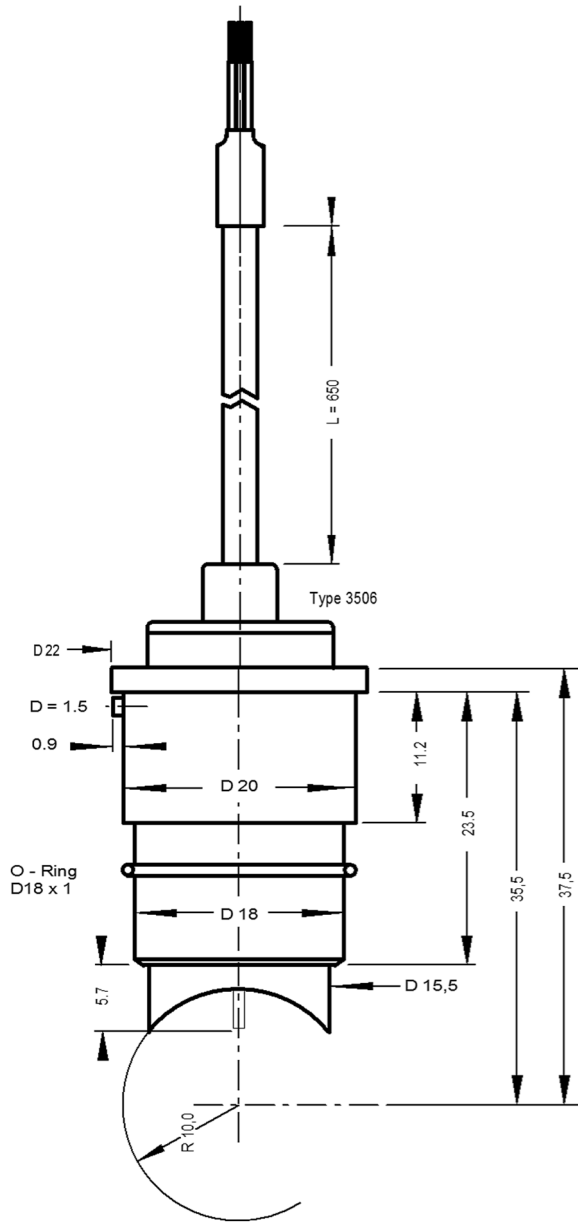
Irrtum und technische Änderungen · vorbehalten Rev. AA/ 10.02.16

Flow meter for gaseous media



vent-captor system 3506 + 3022.31/xx

Dimensions:



Measure (HxLxD): 58x87x18 mm

Connection diagram:

