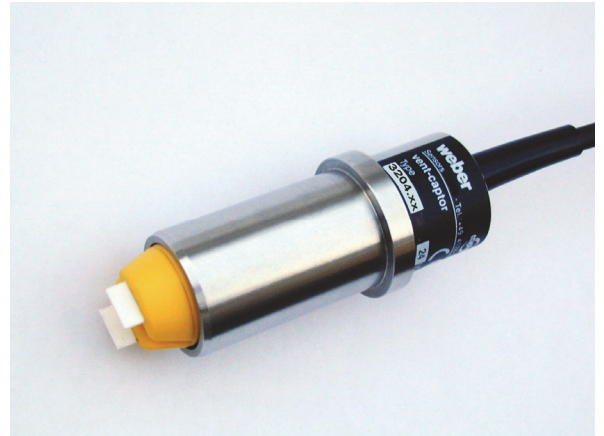


## vent-captor 3204.5x

The vent-captor type 3204.0x / 3204.5x is an air flow monitor which is used where air and other gases in industrial processes need to be monitored.

The compact, electronic sensor works according to the calorimetric measuring principle and without mechanically moving parts. It detects the flow velocity of the medium and converts it into an electrical signal.

- small compact unit
- stainless steel design
- adjustable switching point
- temperature independent
- robust construction (fully resin encapsulated)
- **ISO 9001:2015**

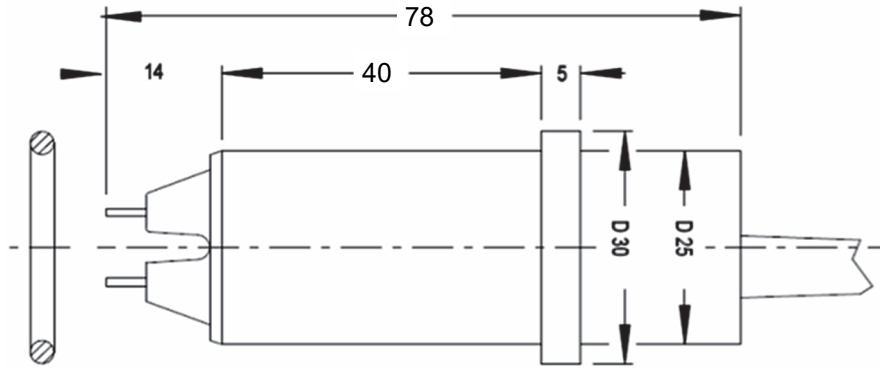


Technical Data		
Type	<b>3204.5x</b>	
Medium	gaseous	
Sensor Data *1		
Switching range	1 m/s to 10 m/s, continuously adjustable	
Factory setting	< 4 m/s	
Medium temperature	-20 °C to +70 °C	
Ambient temperature	-20 °C to +70 °C	
Pressure	max .10 bar	
Switching delay	min. 3 sec. / max. 100 sec. depends on set-point adjustment	
Temperature drift	< 0,5 % per Kelvin	
Repeatability	< 3%	
Hysteresis	< 30%	
Mechanical Data		
Protection class	IP 64	
Material sensor probe	Ceramic	
Material housing	Ultradur (PBTP), stainless steel (AISI 303)	
Mounting accessories	union nut G 1" A, SW 37 mm (AISI 303)	
Electrical connection	2 m oilflex cable / 3 x 0,5 mm <sup>2</sup>	
Housing dimensions	see drawing on second page	
Electrical Data		
Type	3204.50	3204.51
Electrical output without flow:	Thyr. n.c. <b>current-carrying</b>	Thyr. n.o. <b>currentless</b>
Operating voltage	115VAC or 230VAC +6% / -15%	
Switching current	5 - 200 mA	
Starting override time	max. 90 sec.	

\*1 all data related to medium air

vent-captor 3204.5x

Dimensions



connection diagram

