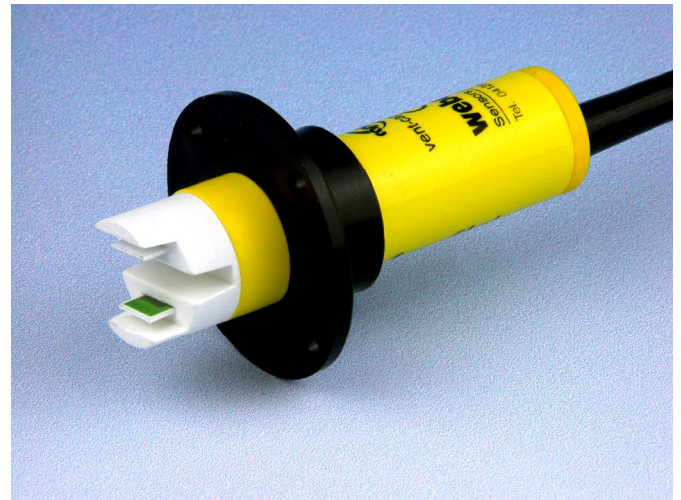


vent-captor 3202.30/xx

The **vent-captor** 3202.30 is an air flow meter for industrial applications. The vent-captor can be integrated into measurement and control systems without additional components. Its function base upon the calorimetric principle and provides a wide measuring range.

- precise flow meter for gaseous media
- adjustable measuring range
- without any moving parts
- linear current output 4-20 mA
- **ISO 9001 : 2008**
- Types/Measuring range:
/5 : 0-5 m/s, /10 : 0-10 m/s, /20 : 0-20 m/s
/30 : 0-30 m/s, /40 : 0-40 m/s*², /50 : 0-50 m/s*²



Technical Data	
Typ	3202.30/xx
Medium	gaseous (aggressive media on request)
Sensor Data * ¹	
Measuring range	0-5 m/s, - 10 m/s, - 20 m/s, - 30 m/s, - 40 m/s* ² , - 50 m/s* ²
Adjustable	continuously from 20 - 100% by means potentiometer for zero point and range
Adjustment characteristics	logarithmic to flow speed
Linearity deviation	< 5% best fitting slope
Repeatability tolerance	< 3%
Medium temperature	-20 °C bis +70 °C
Ambient temperature	-20 °C bis +70 °C
Pressure	with flange: atmospheric / with PG21: max. 1 bar
Temperature drift	< 0,3 % / K
Mechanical data	
Protection class	IP 64
Material sensor probe	ceramic with overglaze
Material housing	Ultradur (PBTP)
Electrical connection	2 m oilflex cable / 3 x 0,5 mm ²
Body dimensions	D20 x L79 mm
Electrical data	
Operating voltage	24 V DC +/- 30 %
Current output	4 - 20 mA
Load	max. 500Ω
Power consumption	approx. 800 mW - 1,3 W (max. flow)

*1 all data relate to medium air *2 only with increased linearity deviation

4-20 mA current output

